



**September 1988  
Persons Not In The  
Labour Force  
Australia**

**Catalogue No. 6220.0**



**EMBARGOED UNTIL 11.30 A.M. 17 JANUARY 1989**

**PERSONS NOT IN THE LABOUR FORCE, AUSTRALIA  
SEPTEMBER 1988**

**IAN CASTLES  
Australian Statistician**

**AUSTRALIAN BUREAU OF STATISTICS**

**CATALOGUE NO. 6220.0**

© Commonwealth of Australia 1989

Printed by R. D. RUBIE, Commonwealth Government Printer, Canberra

PHONE INQUIRIES	• <i>about these statistics and the availability of related unpublished statistics</i> — contact Mr Allan Nicholls on Canberra (062) 52 6504 or any ABS State office.
	• <i>about other statistics and ABS services</i> — contact <b>Information Services</b> on Canberra (062) 52 6007, 52 6627, 52 5402 or any ABS State office.
MAIL INQUIRIES	• <i>write to Information Services</i> , ABS, P.O. Box 10, Belconnen, A.C.T. 2616 or any ABS State office.
ELECTRONIC SERVICES	• on VIATEL — key *656#. • on AUSSTATS — phone (062) 52 6017. • on TELESTATS — phone (062) 52 5404.

## CONTENTS

<i>Table</i>	<i>Page</i>
.. Summary of Findings	1
<b>Civilian population aged 15 to 69, September 1985 to September 1988—</b>	
1 Labour force status and gender	4
<b>Persons not in the labour force with marginal attachment to the labour force, September 1985 to September 1988—</b>	
2 Main reason for not actively looking for work and gender	5
3 Summary of characteristics	6
<b>Discouraged jobseekers, September 1985 to September 1988—</b>	
4 Age	6
<b>Persons not in the labour force—</b>	
5 Occupation in last job, main activity and gender	7
<b>Persons who had had a job—</b>	
6 Reason for ceasing last job and time since last job	8
7 Reason for ceasing last job, status of worker in last job and full-time or part-time status in last job	8
<b>Persons who wanted to work—</b>	
8 Intention to look for work in the next twelve months, age and gender	9
9 type of work preferred, age and gender	9
<b>Persons with marginal attachment to the labour force—</b>	
10 Main reason for not actively looking for work, intention to look for work in the next twelve months and type of work preferred	10
11 Time since last job and whether looked for work in the last twelve months	10
12 Whether looked for work in the last twelve months, family status and gender	11
13 Type of work preferred, family status and gender	11
14 Summary of characteristics	12
<b>Persons who wanted to work but were not actively looking for work and were available to start work within four weeks—</b>	
15 Time since last job, intention to look for work in the nesxt twelve months and gender	13
16 Whether looked for work in the last twelve months, intention to look for work in the next twelve months and gender	14
<b>Persons who wanted to work but were not actively looking for work and were not available to start work within four weeks—</b>	
17 Reason not available to start work within four weeks, intention to look for work in the next twelve months and type of work preferred	14

## APPENDIXES

.. A Glossary	15
.. B Explanatory Notes	16
.. C Technical Note	18



## SUMMARY OF FINDINGS

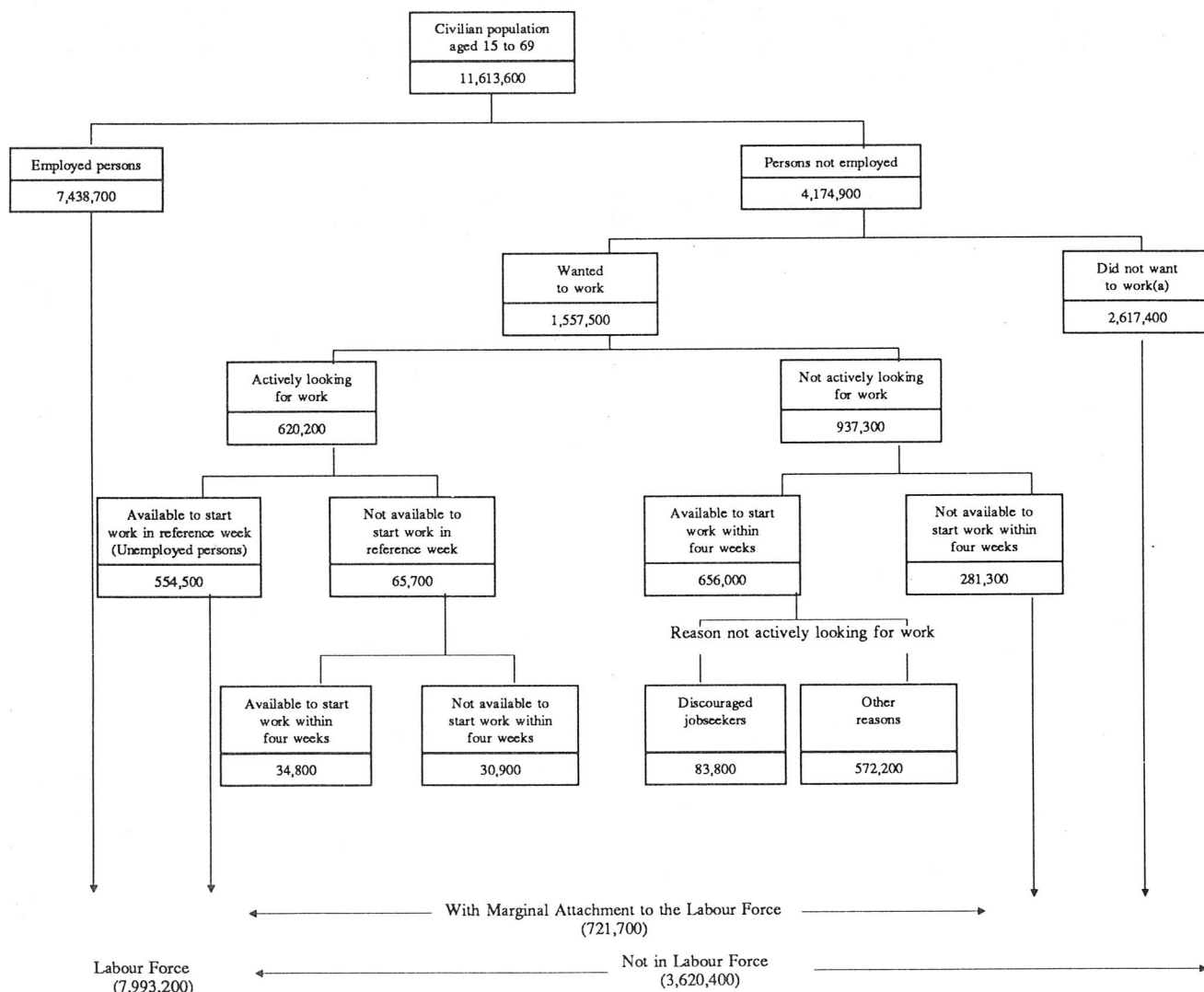
## Persons not in the labour force

In September 1988, persons not in the labour force numbered 3,620,400 and accounted for 31.2 per cent of the civilian population aged 15 to 69. This proportion is similar to the proportion estimated in March 1988 (30.6 per cent) and March 1987 (31.0 per cent).

- About seven out of ten persons not in the labour force were females, whereas, about six out of ten persons in the labour force were male.
- Home duties and childcare were the predominant activities for 56.7 per cent of persons not in the labour force.
- Other principle activities reported were attending an educational institution (18.7 per cent) and being retired or voluntarily inactive (12.6 per cent).
- Of the persons not in the labour force who had worked within the last twenty years, 24.7 per cent had worked as Labourers and related workers in their last job, 19.7 per cent were Clerks and 19.4 per cent were Salespersons and personal service workers.
- Approximately one-third of persons not in the labour force had either last had a job twenty or more years ago, or had never had a job.

The various groups of persons either in the labour force or not in the labour force, including those marginally attached to the labour force, are shown schematically in the following diagram.

DIAGRAM 1. RELATIONSHIP OF PERSONS WITH MARGINAL ATTACHMENT TO THE LABOUR FORCE TO PERSONS IN OR NOT IN THE LABOUR FORCE, SEPTEMBER 1988  
(Source of data: Table 1)



(a) Includes institutionalised, boarding school pupils and persons permanently unable to work.

### Persons not in the labour force who wanted to work

In September 1988 persons aged 15 to 69 not in the labour force who wanted to work numbered 1,002,900. The 15 to 24 age group accounting for 31.4 per cent of this group. The 25 to 34 age group accounted for a further 27.6 per cent and 11.6 per cent were aged 55 to 69.

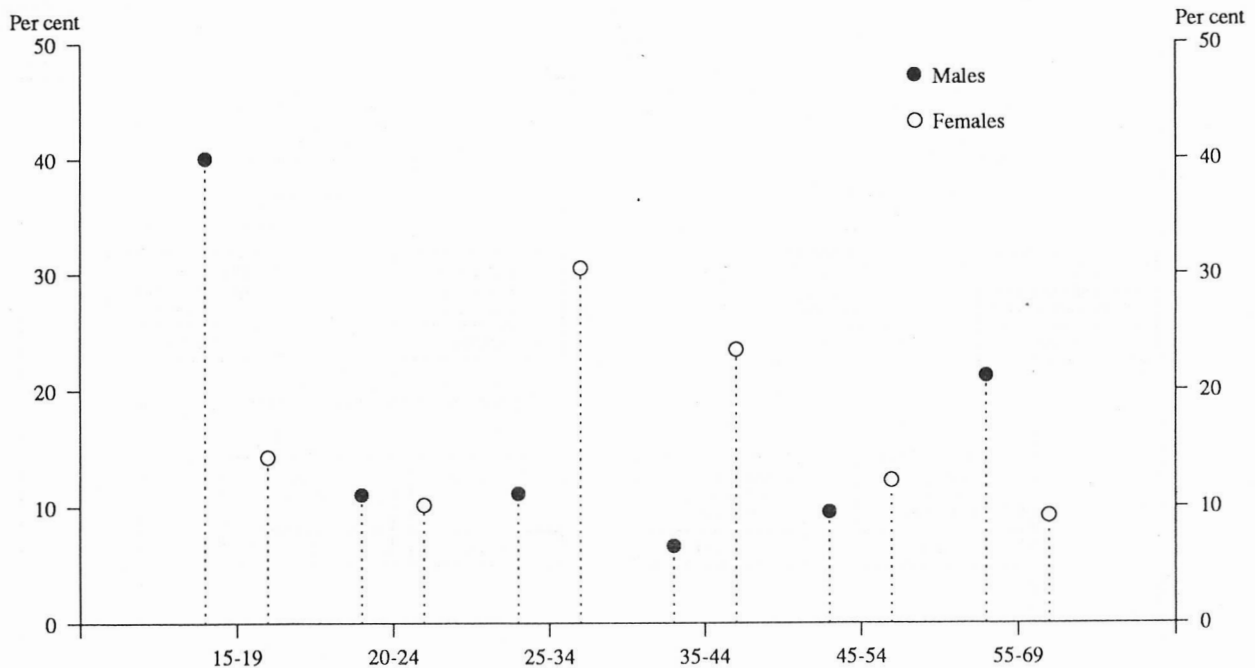
Older age groups are less likely to want to work full time. Some 40.8 per cent of the 15 to 19 age group stated a full-time preference compared with 21.8 per cent in the 35 to 44 age group and 20.5 per cent in the 55 to 64 age group.

### Persons not in the labour force with marginal attachment to the labour force

Persons with marginal attachment to the labour force (i.e. persons neither employed nor unemployed who nevertheless reported some attachment to the labour force) numbered 721,700 in September 1988. This represented 19.9 per cent of all persons aged 15 to 69 not in the labour force.

- About three-quarters of the persons with marginal attachment to the labour force in September 1988 were females.
- A large number of females reported family reasons as their main reason for not actively looking for work (45.1 per cent) — predominantly because their children were too young or they preferred to look after the children.
- About thirty per cent of females reported personal reasons as their main reason for not actively looking for work, and of these females the main personal reasons were 'attending an educational institution' (38.2 per cent) and 'own ill health, physical disability or pregnancy' (24.0 per cent). Almost sixty per cent of males had reported personal reasons for not actively looking for work.
- Approximately three-quarters of persons with marginal attachment were aged 15 to 44 — the 25 to 34 age group accounting for about one-quarter, and about twenty per cent each in the 15 to 19 and 35 to 44 age groups.
- Of males marginally attached to the labour force 40.1 per cent were aged 15 to 19 and 11.2 per cent were aged 25 to 34. For females this pattern was reversed, 14.3 per cent were aged 15 to 19 while 30.5 per cent were in the 25 to 34 aged group.

DIAGRAM 2. AGE DISTRIBUTION OF PERSONS WITH MARGINAL ATTACHMENT TO THE LABOUR FORCE BY GENDER, SEPTEMBER 1988  
(Source of data: Table 14)





- Just over four out of ten persons marginally attached to the labour force intended to look for work in the next twelve months, while a further two out of ten stated that they did not know whether they would look.
- Common reasons reported for not actively looking for those who did not intend to look for work were — 'unable to find suitable childcare' (20.5 per cent), 'children too young or preferred to look after children' (20.4 per cent), and 'had no need to work' (9.9 per cent), and for those who stated they intended to look for work 'attending an educational institution' (26.3 per cent) was the main reason.
- The majority of persons with marginal attachment stated a preference for part-time work (70.2 per cent) with 25.6 per cent stating a full-time preference, the remainder stated that they had no preference. About eighty per cent of females stated a part-time work preference compared with about half of the males.
- About thirty per cent of persons with marginal attachment to the labour force had looked for work in the last twelve months with 105,300 (14.6 per cent) having looked in the last four weeks. Some 30.9 per cent of persons who had looked for work in the last twelve months were married and had dependents.
- About four out of every five persons with marginal attachment to the labour force had previously had a job.
- About two-thirds of those who had had a job were job leavers, 35.5 per cent of whom had left their last job because of pregnancy. The remaining one-third were job losers, with the most common reasons reported being 're-trenched' (40.2 per cent) and 'own ill health or injury' (28.7 per cent).

#### **Discouraged jobseekers**

In September 1988 there were an estimated 83,800 discouraged jobseekers among persons aged 15 to 69. The age distribution of these discouraged jobseekers varied from that of the marginally attached group. A lower percentage were in the 15 to 24 age group (13.7 per cent) and a higher percentage were in the older age groups, 35.1 per cent aged 55 to 69. In the case of those marginally attached, 31.6 per cent were aged 15 to 24 while 12.5 per cent were aged 55 to 69.

- Some 12.1 per cent of discouraged jobseekers had never had a job.
- Of those discouraged jobseekers who had had a job, four out of ten had their last job less than three years ago. Almost six out of ten discouraged jobseekers were job leavers and the remaining four out of ten were job losers.
- Some 64.6 per cent of discouraged jobseekers had a preference for part-time work and 28.5 per cent a preference for full-time work.

#### **Persons not in the labour force who wanted to work but were not actively looking for work and were not available to start work within four weeks**

In September 1988 the group of persons aged 15 to 69 who wanted to work but were not marginally attached to the labour force numbered 281,300. Major reasons given by these people for not being available to start work within four weeks included 'own ill health or injury, physical disability, or pregnancy' (28.8 per cent), 'children too young or preferred to look after children' (26.3 per cent) and 'studying' (22.9 per cent).

A higher proportion of males than females had a preference for full-time work, 57.2 per cent and 22.2 per cent respectively. Some 39.3 per cent of females did not intend to look for work in the next twelve months, compared with 33.6 per cent of males.

TABLE 1. CIVILIAN POPULATION AGED 15 TO 69: LABOUR FORCE STATUS,  
SEPTEMBER 1985 TO SEPTEMBER 1988  
('000)

	Sept. 1985	March 1986	Sept. 1986	March 1987	March 1988	Sept. 1988
MALES						
<i>Civilian population aged 15 to 69</i>	5,477.3	5,533.0	5,590.5	5,654.9	5,764.5	5,829.8
Persons in the labour force	4,495.0	4,543.2	4,570.4	4,632.7	4,711.6	4,718.5
Persons not in the labour force	982.3	989.8	1,020.1	1,022.2	1,052.9	1,111.4
With marginal attachment to the labour force	157.6	153.9	156.8	163.9	177.6	190.8
Wanted to work and were actively looking for work	24.9	14.0	26.3	12.1	13.3	34.7
Were available to start work within four weeks	9.2	10.0	9.1	10.0	10.8	14.8
Were not available to start work within four weeks	15.7	4.0	17.1	2.1	2.5	19.9
Wanted to work but were not actively looking for work and were available to start work within four weeks	132.7	139.9	130.5	151.8	164.3	156.1
Discouraged jobseekers	15.4	21.8	16.2	22.2	19.5	19.7
Other	117.3	118.1	114.3	129.6	144.8	136.4
Without marginal attachment to the labour force	824.7	835.9	863.3	858.2	875.3	920.6
Wanted to work but were not actively looking for work and were not available to start work within four weeks	71.3	64.1	67.4	54.5	63.1	73.9
Did not want to work	691.2	704.0	731.4	733.3	745.5	782.8
Permanently unable to work	19.4	22.7	23.5	20.0	24.1	26.4
Institutionalised(a) and boarding school pupils	42.8	45.1	41.0	50.5	42.6	37.5
FEMALES						
<i>Civilian population aged 15 to 69</i>	5,444.3	5,495.3	5,550.8	5,613.0	5,722.5	5,783.8
Persons in the labour force	2,858.5	2,977.6	3,019.5	3,138.4	3,255.1	3,274.7
Persons not in the labour force	2,585.8	2,517.7	2,531.3	2,474.6	2,467.4	2,509.1
With marginal attachment to the labour force	569.7	543.5	580.4	532.5	547.4	530.9
Wanted to work and were actively looking for work	35.5	21.1	30.7	19.0	20.3	31.0
Were available to start work within four weeks	20.9	14.9	17.5	13.5	16.1	20.0
Were not available to start work within four weeks	14.6	6.2	13.2	5.5	4.2	11.0
Wanted to work but were not actively looking for work and were available to start work within four weeks	534.2	522.4	549.6	513.4	527.1	499.9
Discouraged jobseekers	67.6	69.8	67.4	72.2	72.5	64.1
Other	466.6	452.6	482.2	441.2	454.6	435.7
Without marginal attachment to the labour force	2,016.1	1,974.1	1,950.9	1,942.1	1,919.9	1,978.2
Wanted to work but were not actively looking for work and were not available to start work within four weeks	191.2	195.6	192.5	177.4	187.2	207.4
Did not want to work	1,788.6	1,742.7	1,722.4	1,727.6	1,692.4	1,732.9
Permanently unable to work	10.6	10.5	12.0	8.8	13.4	10.8
Institutionalised(a) and boarding school pupils	25.7	25.4	24.0	28.3	26.9	27.1
PERSONS						
<i>Civilian population aged 15 to 69</i>	10,921.7	11,028.3	11,141.3	11,267.9	11,487.0	11,613.6
Persons in the labour force	7,353.6	7,520.8	7,589.9	7,771.2	7,966.8	7,993.2
Persons not in the labour force	3,568.1	3,507.5	3,551.4	3,496.7	3,520.2	3,620.4
With marginal attachment to the labour force	727.2	697.4	737.2	696.4	725.0	721.7
Wanted to work and were actively looking for work	60.4	35.2	57.0	31.1	33.6	65.7
Were available to start work within four weeks	30.2	25.0	26.7	23.6	26.9	34.8
Were not available to start work within four weeks	30.2	10.2	30.3	7.6	6.7	30.9
Wanted to work but were not actively looking for work and were available to start work within four weeks	666.9	662.3	680.2	665.3	691.4	656.0
Discouraged jobseekers	83.0	91.5	83.6	94.4	92.0	83.8
Other	583.8	570.7	596.5	570.9	599.4	572.2
Without marginal attachment to the labour force	2,840.8	2,810.1	2,814.2	2,800.3	2,795.2	2,898.8
Wanted to work but were not actively looking for work and were not available to start work within four weeks	262.5	259.6	259.9	231.8	250.3	281.3
Did not want to work	2,479.8	2,446.6	2,453.8	2,460.9	2,437.8	2,515.7
Permanently unable to work	30.0	33.3	35.5	28.8	37.5	37.2
Institutionalised(a) and boarding school pupils	68.5	70.5	65.0	78.8	69.5	64.7

(a) Includes some patients in hospitals and sanatoriums and inmates of reformatories, gaols etc.

TABLE 2. PERSONS NOT IN THE LABOUR FORCE WITH MARGINAL ATTACHMENT TO THE LABOUR FORCE:  
MAIN REASON FOR NOT ACTIVELY LOOKING FOR WORK, SEPTEMBER 1985 TO SEPTEMBER 1988  
(<sup>'000</sup>)

	Sept. 1985	March 1986	Sept. 1986	March 1987	March 1988	Sept. 1988
MALES						
Wanted to work and were actively looking for work	24.9	14.0	26.3	12.1	13.3	34.7
Wanted to work but were not actively looking for work and were available to start work within four weeks	132.7	139.9	130.5	151.8	164.3	156.1
<i>Main reason for not actively looking for work—</i>						
Had a job to go to (a)	3.5	6.8	4.9	8.6	6.6	5.8
Personal reasons	93.1	96.0	93.5	105.7	118.4	110.4
Family reasons	4.1	*3.5	3.8	*3.8	5.7	*4.1
Discouraged jobseekers	15.4	21.8	16.2	22.2	19.5	19.7
No jobs in suitable hours	*2.8	*1.0	*1.1	*1.2	*1.3	*2.1
Other reasons	10.1	9.4	10.4	9.7	11.4	12.5
Did not know	*0.7	*1.3	*0.6	*0.8	*1.4	*1.5
<i>Total</i>	<i>157.6</i>	<i>153.9</i>	<i>156.8</i>	<i>163.9</i>	<i>177.6</i>	<i>190.8</i>
FEMALES						
Wanted to work and were actively looking for work	35.5	21.1	30.7	19.0	20.3	31.0
Wanted to work but were not actively looking for work and were available to start work within four weeks	534.2	522.4	549.6	513.4	527.1	499.9
<i>Main reasons for not actively looking for work—</i>						
Had a job to go to (a)	15.7	15.0	15.6	15.1	17.4	13.4
Personal reasons	157.5	151.5	152.4	153.0	161.7	145.8
Own ill health, physical disability, pregnancy	38.6	36.2	33.3	36.5	42.5	35.0
Attending an educational institution	50.9	57.3	55.5	58.0	65.4	55.7
Had no need to work	34.0	31.0	32.3	27.7	25.6	28.3
Give others a chance	6.0	3.7	6.3	4.6	5.9	*3.6
Welfare payments/pension may be affected	14.5	14.1	12.7	15.2	12.5	10.5
Moved house/holidays	13.4	9.2	12.2	11.1	9.9	12.6
Family reasons	244.1	237.4	263.3	235.1	236.3	239.2
Ill health of other than self	13.2	12.4	10.8	11.6	11.0	10.6
Unable to find suitable childcare	71.8	69.4	71.9	67.6	79.5	83.1
Children too young/preferred to look after children	124.6	116.0	138.7	116.1	106.8	107.7
Other family considerations	34.4	39.5	42.0	39.7	39.0	37.8
Discouraged jobseekers	67.6	69.8	67.4	72.2	72.5	64.1
Considered too young or too old by employers	20.7	22.5	18.1	25.0	25.0	23.5
Difficulties with language or ethnic background	4.2	4.2	3.1	3.3	5.6	5.3
Lacked necessary schooling, training, skills or experience	7.4	9.8	8.5	10.4	10.9	12.0
No jobs in locality or line of work	21.6	22.6	27.8	23.7	24.1	17.5
No jobs at all	13.8	10.7	9.7	9.8	7.0	5.7
No jobs in suitable hours	15.6	16.4	15.4	10.7	13.4	8.6
Other reasons	25.5	24.6	29.7	19.2	21.4	24.1
Did not know	7.2	7.8	5.8	8.2	4.5	4.7
<i>Total</i>	<i>569.7</i>	<i>543.5</i>	<i>580.4</i>	<i>532.5</i>	<i>547.4</i>	<i>530.9</i>
PERSONS						
Wanted to work and were actively looking for work	60.4	35.2	57.0	31.1	33.6	65.7
Wanted to work but were not actively looking for work and were available to start work within four weeks	666.9	662.3	680.2	665.3	691.4	656.0
<i>Main reason for not actively looking for work—</i>						
Had a job to go to (a)	19.2	21.8	20.5	34.7	23.9	19.1
Personal reasons	250.5	247.5	245.9	258.7	280.1	256.2
Own ill health, physical disability, pregnancy	66.6	61.6	55.9	61.1	76.2	69.6
Attending an educational institution	102.3	111.1	106.9	119.8	128.2	111.0
Had no need to work	40.1	37.6	39.6	36.8	32.7	35.9
Give others a chance	6.0	4.3	7.1	5.2	6.4	*3.8
Welfare payments/pension may be affected	18.1	18.2	18.9	20.4	17.7	16.9
Moved house/holidays	17.4	14.7	17.6	15.3	19.0	19.0
Family reasons	248.1	240.9	267.1	238.9	242.0	243.2
Ill health of other than self	14.8	12.9	11.4	12.9	12.7	12.7
Unable to find suitable childcare	72.5	70.1	72.6	68.2	81.0	83.7
Children too young/preferred to look after children	126.1	117.2	140.2	117.2	108.2	108.3
Other family considerations	34.7	40.6	43.0	40.5	40.2	38.6
Discouraged jobseekers	83.0	91.5	83.6	94.4	92.0	83.8
Considered too young or too old by employers	26.7	33.2	25.5	35.1	35.4	32.5
Difficulties with language or ethnic background	4.8	5.2	3.8	4.2	6.0	6.5
Lacked necessary schooling, training, skills or experience	8.9	11.5	10.2	12.5	12.6	14.6
No jobs in locality or line of work	26.0	28.2	32.7	31.1	29.7	23.0
No jobs at all	16.6	13.4	11.4	11.6	8.4	7.2
No jobs in suitable hours	18.4	17.5	16.5	11.8	14.7	10.7
Other reasons	35.6	34.0	40.2	28.9	32.8	36.7
Did not know	8.0	9.0	6.4	9.0	5.9	6.3
<i>Total</i>	<i>727.2</i>	<i>697.4</i>	<i>737.2</i>	<i>696.4</i>	<i>725.0</i>	<i>721.7</i>

(a) Includes persons who had job but, up to the end of reference week, had been away from work without pay for four weeks or longer and had not been actively looking for work.

TABLE 3. PERSONS NOT IN THE LABOUR FORCE WITH MARGINAL ATTACHMENT TO THE LABOUR FORCE:  
SUMMARY OF CHARACTERISTICS, SEPTEMBER 1985 TO SEPTEMBER 1988  
(\*000)

	Sept. 1985	March 1986	Sept. 1986	March 1987	March 1988	Sept. 1988
<i>Age group—</i>						
15-19	138.3	131.6	150.1	137.0	143.3	152.6
20-24	75.7	68.1	72.2	60.4	69.8	75.2
25-34	203.8	187.6	196.2	185.3	193.8	183.0
35-44	146.1	141.8	151.9	145.5	145.5	137.3
45-54	82.6	84.3	82.6	80.4	76.3	83.5
55-64	64.0	65.9	61.8	67.3	74.2	69.9
65-69	16.6	18.1	22.4	20.6	22.1	20.2
<i>Time since last job—</i>						
Had had a job	599.8	586.7	609.0	589.2	609.5	597.9
Under 6 months	91.7	110.4	97.5	122.1	128.2	98.9
6 and under 12 months	68.2	48.7	75.2	46.8	59.8	78.4
1 and under 3 years	118.2	111.2	115.3	117.9	127.8	134.1
3 and under 5 years	89.6	84.6	86.7	77.3	75.8	81.2
5 and under 10 years	117.6	118.4	118.3	115.0	107.2	108.1
10 and under 20 years	88.8	85.4	86.0	84.3	85.7	72.2
20 years or more	25.7	27.9	29.9	25.8	25.0	25.1
Had never had a job	127.5	110.8	128.2	106.3	115.5	123.7
<i>Whether looked for work in the last twelve months(a)—</i>						
Had looked for work	213.8	188.2	197.6	185.4	185.7	220.7
Less than 5 weeks ago	100.4	78.9	95.4	71.7	73.2	105.3
5 and less than 13 weeks ago	70.3	72.6	64.2	76.9	77.9	79.0
13 to 52 weeks ago	43.1	36.8	38.0	36.8	34.8	36.4
Had not looked for work	513.4	509.3	539.6	511.0	539.2	500.9
<i>Intention to look for work in the next twelve months—</i>						
Intended to look	274.3	278.3	286.5	284.1	308.2	293.2
Did not intend to look	199.6	206.7	223.5	203.7	194.8	193.7
Did not know	169.7	155.5	149.6	154.0	164.5	150.0
Not asked(b)	83.6	56.9	77.6	54.7	57.5	84.8
<i>Type of work preferred—</i>						
Full-time	178.3	148.4	176.2	154.3	165.9	185.1
Part-time	520.6	523.7	528.8	508.5	529.0	506.6
No preference	28.4	25.3	32.2	34.6	30.2	29.9
<b>Total</b>	<b>727.2</b>	<b>697.4</b>	<b>737.2</b>	<b>696.4</b>	<b>725.0</b>	<b>721.7</b>
Males	157.6	153.9	156.8	163.9	177.6	190.8
Females	569.7	543.5	580.4	532.5	547.4	530.9

(a) Persons who had left a job in the last twelve months were only asked whether they had looked for work since that job. (b) Comprises persons who had a job to go to, persons who took active steps to find work and persons who had a job but, up to the end of reference week, had been away from work without pay for four weeks or longer and had not been actively looking for work.

TABLE 4. PERSONS NOT IN THE LABOUR FORCE WHO WERE DISCOURAGED JOBSEEKERS: AGE,  
SEPTEMBER 1985 TO SEPTEMBER 1988  
(\*000)

Age group	Sept. 1985	March 1986	Sept. 1986	March 1987	March 1988	Sept. 1988
15-19	5.3	7.2	7.1	6.7	7.9	8.0
20-24	5.4	6.0	*2.9	*3.1	*2.7	*3.5
25-34	14.0	12.7	12.8	11.7	15.3	12.8
35-44	17.2	18.1	18.6	21.8	19.0	15.3
45-54	17.9	18.4	13.9	18.6	15.4	14.8
55-64	17.2	19.7	19.6	23.1	22.3	22.3
65-69	6.0	9.4	8.7	9.4	9.5	7.1
<b>Total</b>	<b>83.0</b>	<b>91.5</b>	<b>83.6</b>	<b>94.4</b>	<b>92.0</b>	<b>83.8</b>

**TABLE 5. PERSONS NOT IN THE LABOUR FORCE(a) : OCCUPATION IN LAST JOB AND MAIN ACTIVITY, SEPTEMBER 1988**  
( '000)

Occupation in last job	Main activity					Other	Total
	Home duties / childcare	Attending an educational institution	Retired / voluntarily inactive	Own illness / injury; own disability / handicap	Worked in unpaid voluntary job		
<b>MALES</b>							
Last job less than 20 years ago	78.3	101.1	368.5	184.2	12.6	50.4	795.1
Managers and administrators	9.2	* 1.0	59.9	10.7	* 1.1	5.9	87.8
Professionals	* 3.5	9.3	26.9	6.6	* 3.6	4.5	54.4
Para-professionals	5.8	6.5	20.7	5.6	* 0.9	* 2.9	42.4
Tradespersons	16.5	6.8	83.9	48.4	* 2.2	12.0	169.7
Clerks	5.0	10.2	31.4	9.0	* 0.9	* 2.0	58.5
Salespersons and personal service workers	5.9	18.9	18.6	9.6	* 0.8	* 3.9	57.8
Plant and machine operators, and drivers	11.3	* 4.3	44.5	28.2	* 0.5	6.4	95.2
Labourers and related workers	21.1	44.2	82.5	66.1	* 2.6	12.8	229.3
Last job 20 or more years ago	* 2.1	* 0.0	5.6	7.7	* 0.0	* 0.9	16.3
Had never had a job	* 1.8	242.5	* 2.3	13.7	* 0.6	* 1.7	262.5
<b>Total</b>	<b>82.2</b>	<b>343.5</b>	<b>376.3</b>	<b>205.6</b>	<b>13.3</b>	<b>52.9</b>	<b>1,073.8</b>
<b>FEMALES</b>							
Last job less than 20 years ago	1,399.6	96.0	53.0	44.8	22.4	44.8	1,660.7
Managers and administrators	61.8	* 0.4	5.9	* 2.2	* 1.1	* 4.4	75.7
Professionals	81.4	5.7	4.8	* 1.9	* 2.3	5.0	100.9
Para-professionals	56.1	* 2.7	* 2.3	* 2.2	* 0.9	* 1.2	65.5
Tradespersons	64.5	* 1.3	* 2.2	* 3.1	* 0.7	* 2.5	74.3
Clerks	363.3	18.9	14.4	8.6	8.1	11.1	424.5
Salespersons and personal service workers	336.2	48.7	11.1	8.7	* 3.6	10.2	418.4
Plant and machine operators, and drivers	110.7	* 2.1	* 2.9	* 4.4	* 1.9	* 2.1	124.1
Labourers and related workers	325.7	16.2	9.5	13.8	* 3.7	8.3	377.2
Last job 20 or more years ago	393.1	* 0.6	13.4	9.1	6.9	7.8	430.9
Had never had a job	142.0	224.1	4.5	13.6	* 2.2	* 4.0	390.4
<b>Total</b>	<b>1,934.6</b>	<b>320.8</b>	<b>70.9</b>	<b>67.5</b>	<b>31.6</b>	<b>56.6</b>	<b>2,481.9</b>
<b>PERSONS</b>							
Last job less than 20 years ago	1,477.9	197.1	421.5	229.0	35.0	95.2	2,455.7
Managers and administrators	71.0	* 1.4	65.8	12.9	* 2.2	10.3	163.5
Professionals	84.8	14.9	31.7	8.5	5.9	9.5	155.3
Para-professionals	61.9	9.3	23.1	7.7	* 1.8	* 4.0	107.8
Tradespersons	81.0	8.0	86.1	51.5	* 2.9	14.5	244.0
Clerks	368.3	29.1	45.8	17.6	9.1	13.2	483.0
Salespersons and personal service workers	342.1	67.6	29.7	18.3	4.5	14.1	476.3
Plant and machine operators, and drivers	122.0	6.4	47.4	32.6	* 2.4	8.6	219.3
Labourers and related workers	346.8	60.4	92.0	79.9	6.3	21.1	606.5
Last job 20 or more years ago	395.2	* 0.6	19.0	16.8	6.9	8.7	447.2
Had never had a job	143.8	466.5	6.7	27.2	* 2.9	5.7	652.8
<b>Total</b>	<b>2,016.8</b>	<b>664.3</b>	<b>447.2</b>	<b>273.0</b>	<b>44.9</b>	<b>109.6</b>	<b>3,555.7</b>

( a ) Excludes students boarding at school, some patients in hospitals and sanatoriums and inmates of reformatories, gaols, etc.

**TABLE 6. PERSONS NOT IN THE LABOUR FORCE WHO HAD HAD A JOB : REASON FOR CEASING LAST JOB AND TIME SINCE LAST JOB, SEPTEMBER 1988**  
(\*000)

Reason for ceasing last job	Time since last job							Total
	Under 6 months	6 and under 12 months	1 and under 3 years	3 and under 5 years	5 and under 10 years	10 and under 20 years	20 years or more	
Job loser	88.5	77.0	171.7	137.3	215.5	161.7	45.4	897.0
Retrenched	29.1	25.1	48.3	35.6	54.2	43.0	7.6	242.8
Job was temporary or seasonal and did not leave to return to studies	33.1	26.3	31.3	12.9	17.3	12.2	7.3	140.3
Own ill health or injury	23.2	22.6	86.1	85.4	138.7	102.9	29.1	488.0
Business closed down for economic reasons	* 3.2	* 3.1	6.0	* 3.4	5.3	* 3.6	* 1.4	25.9
Job leaver	146.7	170.2	312.1	248.4	399.4	303.3	401.7	1,981.8
Unsatisfactory work arrangements	18.2	7.8	17.3	7.9	10.3	5.9	* 1.1	68.6
Job was temporary or seasonal and left to return to studies	7.6	22.6	9.6	* 0.6	* 0.4	* 0.0	* 0.0	40.8
Retired/did not want to work any longer	31.6	30.9	110.1	116.8	188.1	95.8	34.0	607.4
Returned to studies	12.1	43.6	22.6	7.3	* 2.2	* 0.8	* 0.0	88.6
To get married	* 1.3	* 0.8	* 4.0	5.6	16.2	39.3	221.7	288.9
Pregnancy/to have children	28.8	31.2	85.4	61.9	104.4	84.0	84.4	480.1
To look after family, house or someone else	11.4	9.0	19.9	20.0	31.8	40.6	42.4	175.1
To have holiday/to move house/spouse transferred	19.9	14.8	25.4	18.7	34.5	28.6	11.3	153.2
Business closed down for other reasons	5.9	* 2.9	7.1	5.0	* 4.4	* 4.3	* 2.9	32.5
Other	9.8	6.6	10.6	4.6	7.0	* 4.0	* 4.1	46.7
Not asked(a)	24.1	..	..	..	..	..	..	24.1
<b>Total</b>	<b>259.2</b>	<b>247.3</b>	<b>483.7</b>	<b>385.8</b>	<b>614.8</b>	<b>464.9</b>	<b>447.2</b>	<b>2,902.9</b>
Males	89.1	92.5	169.5	148.0	212.3	83.7	16.3	811.4
Females	170.1	154.8	314.3	237.8	402.5	381.2	430.9	2,091.6

( a ) Persons who had a job but, up to the end of reference week, had been away from work without pay for four weeks or longer and had not been actively looking for work.

**TABLE 7. PERSONS NOT IN THE LABOUR FORCE WHO HAD HAD A JOB : REASON FOR CEASING LAST JOB, STATUS OF WORKER IN LAST JOB AND FULL-TIME OR PART-TIME STATUS IN LAST JOB, SEPTEMBER 1988**  
(\*000)

Reason for ceasing last job	Last job less than 20 years ago							Total
	Status of worker in last job			Full-time or part-time status in last job				
	Em- ployers	Self- employed (a)	Wage and salary earners	Full-time	Part-time	Varied / did not know	Last job 20 or more years ago	
Job loser	21.4	61.6	768.6	588.1	246.8	16.6	45.4	897.0
Retrenched	* 1.1	5.1	229.1	135.9	94.8	4.5	7.6	242.8
Job was temporary or seasonal and did not leave to return to studies	* 0.9	4.8	127.3	47.6	79.1	6.3	7.3	140.3
Own ill health or injury	13.4	35.8	409.7	386.9	67.2	4.8	29.1	488.0
Business closed down for economic reasons	6.1	15.9	* 2.5	17.8	5.7	* 1.0	* 1.4	25.9
Job leaver	47.7	82.8	1,449.6	1,113.7	446.0	20.4	401.7	1,981.8
Unsatisfactory work arrangements	* 0.1	* 2.3	65.1	32.2	34.0	* 1.2	* 1.1	68.6
Job was temporary or seasonal and left to return to studies	* 0.0	* 0.4	40.3	17.0	22.9	* 0.8	* 0.0	40.8
Retired/did not want to work any longer	27.0	45.2	501.2	442.8	124.5	6.1	34.0	607.4
Returned to studies	* 0.0	* 1.7	86.9	46.3	41.2	* 1.1	* 0.0	88.6
To get married	* 0.0	* 0.7	66.6	60.0	6.2	* 1.1	221.7	288.9
Pregnancy/to have children	* 1.0	5.0	389.7	299.4	92.5	* 3.8	84.4	480.1
To look after family, house or someone else	* 3.6	6.9	122.3	80.4	50.3	* 2.0	42.4	175.1
To have holiday/to move house/spouse transferred	* 2.6	5.9	133.5	86.9	53.8	* 1.2	11.3	153.2
Business closed down for other reasons	12.3	11.7	5.7	22.8	5.5	* 1.4	* 2.9	32.5
Other	* 1.3	* 3.0	38.3	25.9	15.0	* 1.6	* 4.1	46.7
Not asked(b)	* 0.0	* 0.0	24.1	15.3	8.0	* 0.8	* 0.0	24.1
<b>Total</b>	<b>69.1</b>	<b>144.4</b>	<b>2,242.2</b>	<b>1,717.1</b>	<b>700.8</b>	<b>37.8</b>	<b>447.2</b>	<b>2,902.9</b>
Males	30.8	66.5	697.8	692.7	93.8	8.6	16.3	811.4
Females	38.4	77.9	1,544.4	1,024.5	607.0	29.2	430.9	2,091.6

( a ) Includes unpaid family helpers. ( b ) Persons who had a job but, up to the end of reference week, had been away from work without pay for four weeks or longer and had not been actively looking for work.

**TABLE 8. PERSONS NOT IN THE LABOUR FORCE WHO WANTED TO WORK : INTENTION TO LOOK FOR WORK IN THE NEXT TWELVE MONTHS AND AGE, SEPTEMBER 1988**  
(\*000)

<i>Intention to look for work in the next twelve months</i>	<i>Age group</i>							<i>Total</i>
	<i>15-19</i>	<i>20-24</i>	<i>25-34</i>	<i>35-44</i>	<i>45-54</i>	<i>55-64</i>	<i>65-69</i>	
<b>MALES</b>								
Intended to look	51.5	13.5	16.6	10.8	11.7	11.1	* 1.7	117.0
Did not intend to look	17.0	* 1.2	* 2.8	* 3.5	6.2	13.7	12.0	56.3
Did not know	15.8	* 2.9	5.8	5.6	5.3	10.9	* 2.8	49.1
Not asked(a)	19.1	8.7	6.1	* 2.2	* 3.1	* 3.0	* 0.0	42.2
<b>Total</b>	<b>103.4</b>	<b>26.3</b>	<b>31.3</b>	<b>22.1</b>	<b>26.4</b>	<b>38.7</b>	<b>16.5</b>	<b>264.7</b>
<b>FEMALES</b>								
Intended to look	60.0	35.2	80.5	57.2	26.4	9.5	* 0.4	269.3
Did not intend to look	15.5	23.1	93.2	49.8	27.6	27.0	7.5	243.7
Did not know	16.4	16.8	52.9	43.5	23.9	13.6	* 1.5	168.6
Not asked(a)	11.3	7.3	18.9	13.5	4.6	* 1.0	* 0.0	56.6
<b>Total</b>	<b>103.1</b>	<b>82.3</b>	<b>245.6</b>	<b>164.0</b>	<b>82.5</b>	<b>51.2</b>	<b>9.5</b>	<b>738.2</b>
<b>PERSONS</b>								
Intended to look	111.5	48.7	97.1	68.0	38.2	20.7	* 2.2	386.3
Did not intend to look	32.5	24.2	96.0	53.3	33.8	40.6	19.5	300.0
Did not know	32.2	19.7	58.7	49.1	29.2	24.5	* 4.3	217.7
Not asked(a)	30.4	15.9	25.1	15.7	7.7	* 4.0	* 0.0	98.8
<b>Total</b>	<b>206.5</b>	<b>108.6</b>	<b>276.9</b>	<b>186.2</b>	<b>108.9</b>	<b>89.9</b>	<b>26.0</b>	<b>1,002.9</b>

( a ) Comprises persons who had a job to go to, persons who took active steps to find work and persons who had a job but, up to the end of reference week, had been away from work without pay for four weeks or longer and had not been actively looking for work.

**TABLE 9. PERSONS NOT IN THE LABOUR FORCE WHO WANTED TO WORK : TYPE OF WORK PREFERRED AND AGE, SEPTEMBER 1988**  
(\*000)

<i>Type of work preferred</i>	<i>Age group</i>							<i>Total</i>
	<i>15-19</i>	<i>20-24</i>	<i>25-34</i>	<i>35-44</i>	<i>45-54</i>	<i>55-64</i>	<i>65-69</i>	
<b>MALES</b>								
Full-time	48.0	17.3	21.6	14.3	16.8	13.1	* 1.8	133.0
Part-time	53.7	8.2	6.9	5.0	7.7	21.9	13.1	116.6
No preference	* 1.7	* 0.7	* 2.8	* 2.8	* 1.9	* 3.6	* 1.6	15.0
<b>Total</b>	<b>103.4</b>	<b>26.3</b>	<b>31.3</b>	<b>22.1</b>	<b>26.4</b>	<b>38.7</b>	<b>16.5</b>	<b>264.7</b>
<b>FEMALES</b>								
Full-time	36.2	24.6	34.9	26.3	12.9	5.2	* 0.3	140.5
Part-time	63.6	55.1	200.3	131.7	63.6	43.3	8.9	566.5
No preference	* 3.4	* 2.6	10.4	6.0	6.0	* 2.6	* 0.3	31.2
<b>Total</b>	<b>103.1</b>	<b>82.3</b>	<b>245.6</b>	<b>164.0</b>	<b>82.5</b>	<b>51.2</b>	<b>9.5</b>	<b>738.2</b>
<b>PERSONS</b>								
Full-time	84.2	42.0	56.5	40.6	29.7	18.4	* 2.2	273.5
Part-time	117.3	63.3	207.2	136.8	71.3	65.3	22.0	683.1
No preference	5.0	* 3.3	13.2	8.8	7.9	6.2	* 1.8	46.3
<b>Total</b>	<b>206.5</b>	<b>108.6</b>	<b>276.9</b>	<b>186.2</b>	<b>108.9</b>	<b>89.9</b>	<b>26.0</b>	<b>1,002.9</b>

**TABLE 10. PERSONS NOT IN THE LABOUR FORCE WITH MARGINAL ATTACHMENT TO THE LABOUR FORCE : MAIN REASON FOR NOT ACTIVELY LOOKING FOR WORK, INTENTION TO LOOK FOR WORK IN THE NEXT TWELVE MONTHS AND TYPE OF WORK PREFERRED, SEPTEMBER 1988 ('000)**

	<i>Intention to look for work in the next twelve months</i>				<i>Type of work preferred</i>			<i>Total</i>
	<i>Intended to look</i>	<i>Did not intend to look</i>		<i>Not asked(a)</i>	<i>Full-time</i>	<i>Part-time</i>	<i>No preference</i>	
		<i>Did not know</i>	<i>Did not know</i>					
Wanted to work and were actively looking for work	..	..	..	65.7	37.5	26.2	* 2.0	65.7
Were available to start work within four weeks	..	..	..	34.8	17.1	16.0	* 1.7	34.8
Were not available to start work within four weeks	..	..	..	30.9	20.4	10.2	* 0.3	30.9
Wanted to work but were not actively looking for work and were available to start work within four weeks	293.2	193.7	150.0	19.1	147.7	480.4	27.9	656.0
<i>Main reason for not actively looking for work--</i>								
Had a job to go to(b)	..	..	..	19.1	8.7	10.0	* 0.4	19.1
Personal reasons	139.9	63.1	53.2	..	70.9	174.4	10.8	256.2
Own ill health, physical disability, pregnancy	29.8	18.8	21.0	..	22.8	40.9	5.8	69.6
Attending an educational institution	77.1	15.7	18.2	..	33.3	74.5	* 3.1	111.0
Had no need to work	9.4	19.2	7.3	..	* 3.2	31.8	* 0.8	35.9
Give others a chance	* 0.1	* 1.7	* 2.0	..	* 0.0	* 3.8	* 0.0	* 3.8
Welfare payments/pension may be affected	5.1	7.7	* 4.2	..	* 2.4	13.8	* 0.8	16.9
Moved house/holidays	18.4	* 0.0	* 0.6	..	9.2	9.6	* 0.3	19.0
Family reasons	82.6	96.4	64.2	..	31.9	202.9	8.4	243.2
Ill health of other than self	6.1	* 4.4	* 2.2	..	* 3.4	8.8	* 0.5	12.7
Unable to find suitable childcare	21.5	39.7	22.5	..	11.3	69.0	* 3.4	83.7
Children too young/preferred to look after children	40.9	39.5	27.9	..	12.3	92.2	* 3.7	108.3
Other family considerations	14.2	12.8	11.6	..	4.9	32.9	* 0.8	38.6
Discouraged jobseekers	40.5	24.3	19.1	..	23.9	54.1	5.8	83.8
Considered too young or too old by employers	9.0	16.0	7.5	..	7.8	21.2	* 3.5	32.5
Difficulties with language or ethnic background	* 4.3	* 0.4	* 1.8	..	* 2.8	* 3.1	* 0.6	6.5
Lacked necessary schooling, training, skills or experience	8.2	* 2.3	* 4.1	..	4.9	9.4	* 0.4	14.6
No jobs in locality or line of work	13.8	4.5	4.7	..	6.4	15.8	* 0.8	23.0
No jobs at all	5.3	* 1.0	* 1.0	..	* 2.0	4.7	* 0.5	7.2
No jobs in suitable hours	6.1	* 1.6	* 3.0	..	* 0.5	10.1	* 0.0	10.7
Other reasons	20.0	6.9	9.8	..	10.1	24.5	* 2.1	36.7
Did not know	* 4.1	* 1.4	* 0.8	..	* 1.6	* 4.4	* 0.3	6.3
<b>Total</b>	293.2	193.7	150.0	84.8	185.1	506.6	29.9	721.7

( a ) Comprises persons who had a job to go to, persons who took active steps to find work and persons as defined in footnote(b). ( b ) Includes persons who had a job but, up to the end of reference week, had been away from work without pay for four weeks or longer and had not been actively looking for work.

**TABLE 11. PERSONS NOT IN THE LABOUR FORCE WITH MARGINAL ATTACHMENT TO THE LABOUR FORCE : TIME SINCE LAST JOB AND WHETHER LOOKED FOR WORK IN THE LAST TWELVE MONTHS(a), SEPTEMBER 1988 ('000)**

<i>Time since last job</i>	<i>Had looked for work in the last 12 months</i>			<i>Total</i>	<i>Had not looked for work in the last 12 months</i>	<i>Total</i>
	<i>Less than 5 weeks ago</i>	<i>5 and less than 13 weeks ago</i>	<i>13 to 52 weeks ago</i>			
Had had a job	78.9	65.0	29.2	173.1	424.9	597.9
Under 6 months	20.3	11.2	* 1.7	33.1	65.8	98.9
6 and under 12 months	16.9	11.8	* 3.9	32.5	45.8	78.4
1 and under 3 years	19.4	15.8	9.2	44.4	89.7	134.1
3 and under 5 years	7.7	11.6	* 4.1	23.4	57.8	81.2
5 and under 10 years	9.2	8.4	7.1	24.8	83.3	108.1
10 and under 20 years	4.6	4.7	* 2.0	11.3	60.9	72.2
20 years or more	* 0.9	* 1.5	* 1.2	* 3.6	21.5	25.1
Had never had a job	26.4	14.0	7.2	47.6	76.1	123.7
<b>Total</b>	105.3	79.0	36.4	220.7	500.9	721.7

( a ) Persons who had left a job in the last twelve months were only asked whether they had looked for work since that job.



**TABLE 12. PERSONS NOT IN THE LABOUR FORCE WITH MARGINAL ATTACHMENT TO THE LABOUR FORCE : WHETHER LOOKED FOR WORK IN THE LAST TWELVE MONTHS AND FAMILY STATUS, SEPTEMBER 1988 ('000)**

<i>Whether looked for work in the last twelve months(a)</i>	<i>Family status</i>									<i>Total</i>
	<i>Member of a family</i>									
	<i>Husband or wife</i>		<i>Total</i>	<i>Not-married family head</i>	<i>Full-time student aged 15-24(b)</i>	<i>Other child/relative of family head</i>	<i>Total</i>	<i>Not a member of a family</i>	<i>Family status not determined</i>	
	<i>With dependents present</i>	<i>Without dependents present</i>								
<b>MALES</b>										
Had looked for work	12.6	9.9	22.5	* 1.2	30.3	10.6	64.6	10.4	6.9	82.0
Less than 5 weeks ago	6.1	* 4.4	10.5	* 0.3	19.5	5.6	35.8	6.8	4.5	47.1
5 and less than 13 weeks ago	5.5	* 3.7	9.2	* 0.6	7.7	* 3.7	21.2	* 3.0	* 1.8	26.0
13 to 52 weeks ago	* 1.1	* 1.8	* 2.8	* 0.3	* 3.2	* 1.3	7.6	* 0.6	* 0.7	8.9
Had not looked for work	13.5	26.4	39.8	* 2.6	36.4	9.0	87.9	14.7	6.2	108.8
<i>Total</i>	<i>26.1</i>	<i>36.3</i>	<i>62.3</i>	<i>* 3.8</i>	<i>66.8</i>	<i>19.6</i>	<i>152.5</i>	<i>25.1</i>	<i>13.1</i>	<i>190.8</i>
<b>FEMALES</b>										
Had looked for work	55.5	17.5	73.0	21.1	24.1	5.6	123.8	5.9	9.0	138.7
Less than 5 weeks ago	21.3	5.4	26.7	9.0	12.1	* 2.9	50.7	* 3.6	* 3.9	58.2
5 and less than 13 weeks ago	22.6	8.1	30.7	7.3	9.1	* 1.7	48.8	* 1.1	* 3.1	53.0
13 to 52 weeks ago	11.6	* 4.0	15.6	4.8	* 3.0	* 0.9	24.3	* 1.3	* 1.9	27.5
Had not looked for work	204.0	55.8	259.8	54.6	31.4	7.8	353.6	19.0	19.5	392.1
<i>Total</i>	<i>259.5</i>	<i>73.3</i>	<i>332.8</i>	<i>75.7</i>	<i>55.5</i>	<i>13.4</i>	<i>477.4</i>	<i>25.0</i>	<i>28.5</i>	<i>530.9</i>
<b>PERSONS</b>										
Had looked for work	68.1	27.4	95.5	22.3	54.4	16.2	188.4	16.4	15.9	220.7
Less than 5 weeks ago	27.4	9.8	37.2	9.3	31.5	8.5	86.5	10.4	8.4	105.3
5 and less than 13 weeks ago	28.0	11.8	39.9	8.0	16.8	5.4	70.1	* 4.1	4.9	79.0
13 to 52 weeks ago	12.7	5.7	18.4	5.0	6.2	* 2.3	31.8	* 1.9	* 2.6	36.4
Had not looked for work	217.5	82.1	299.6	57.2	67.8	16.8	441.5	33.8	25.7	500.9
<i>Total</i>	<i>285.6</i>	<i>109.5</i>	<i>395.1</i>	<i>79.5</i>	<i>122.3</i>	<i>33.0</i>	<i>629.9</i>	<i>50.1</i>	<i>41.6</i>	<i>721.7</i>

( a ) Persons who had left a job in the last twelve months were only asked whether they had looked for work since that job. ( b ) Excludes persons aged 20 to 24 attending school.

**TABLE 13. PERSONS NOT IN THE LABOUR FORCE WITH MARGINAL ATTACHMENT TO THE LABOUR FORCE : TYPE OF WORK PREFERRED AND FAMILY STATUS, SEPTEMBER 1988 ('000)**

<i>Type of work preferred</i>	<i>Family status</i>									<i>Total</i>
	<i>Member of a family</i>									
	<i>Husband or wife</i>		<i>Total</i>	<i>Not-married family head</i>	<i>Full-time student aged 15-24(a)</i>	<i>Other child/relative of family head</i>	<i>Total</i>	<i>Not a member of a family</i>	<i>Family status not determined</i>	
	<i>With dependents present</i>	<i>Without dependents present</i>								
<b>MALES</b>										
Full-time	14.5	14.1	28.6	* 2.0	28.4	13.5	72.5	11.2	6.9	90.7
Part-time	9.4	19.8	29.3	* 1.6	37.2	5.1	73.1	12.0	6.1	91.2
No preference	* 2.2	* 2.3	4.5	* 0.2	* 1.2	* 1.0	6.9	* 1.9	* 0.1	8.9
<i>Total</i>	<i>26.1</i>	<i>36.3</i>	<i>62.3</i>	<i>* 3.8</i>	<i>66.8</i>	<i>19.6</i>	<i>152.5</i>	<i>25.1</i>	<i>13.1</i>	<i>190.8</i>
<b>FEMALES</b>										
Full-time	27.3	11.1	38.4	19.1	15.3	9.4	82.2	5.3	7.0	94.4
Part-time	225.0	57.4	282.4	52.4	38.5	* 3.7	377.0	18.1	20.3	415.5
No preference	7.2	4.8	12.0	* 4.2	* 1.7	* 0.3	18.2	* 1.6	* 1.2	21.0
<i>Total</i>	<i>259.5</i>	<i>73.3</i>	<i>332.8</i>	<i>75.7</i>	<i>55.5</i>	<i>13.4</i>	<i>477.4</i>	<i>25.0</i>	<i>28.5</i>	<i>530.9</i>
<b>PERSONS</b>										
Full-time	41.8	25.2	67.0	21.1	43.7	22.9	154.7	16.5	13.9	185.1
Part-time	234.5	77.3	311.7	54.0	75.7	8.7	450.1	30.1	26.4	506.6
No preference	9.4	7.1	16.5	* 4.4	* 2.9	* 1.3	25.1	* 3.5	* 1.3	29.9
<i>Total</i>	<i>285.6</i>	<i>109.5</i>	<i>395.1</i>	<i>79.5</i>	<i>122.3</i>	<i>33.0</i>	<i>629.9</i>	<i>50.1</i>	<i>41.6</i>	<i>721.7</i>

( a ) Excludes persons aged 20 to 24 attending school.

TABLE 14. PERSONS NOT IN THE LABOUR FORCE WITH MARGINAL ATTACHMENT TO THE LABOUR FORCE : SUMMARY OF CHARACTERISTICS, SEPTEMBER 1988 ('000)

	Persons who wanted to work and were actively looking for work	Persons who wanted to work but were not actively looking for work and were available to start work within four weeks			Persons with marginal attachment to the labour force		
		Discouraged job-seekers	Other	Total	Males	Females	Persons
<i>Age group--</i>							
15-19	28.9	8.0	115.7	123.7	76.5	76.1	152.6
20-24	11.6	* 3.5	60.0	63.6	21.2	54.0	75.2
25-34	10.9	12.8	159.3	172.1	21.4	161.7	183.0
35-44	7.6	15.3	114.4	129.7	12.8	124.5	137.3
45-54	4.6	14.8	64.0	78.9	18.4	65.1	83.5
55-64	* 2.1	22.3	45.6	67.9	27.5	42.5	69.9
65-69	* 0.0	7.1	13.1	20.2	13.1	7.1	20.2
<i>Family status--</i>							
Member of a family	53.2	69.9	506.9	576.7	152.5	477.4	629.9
Husband or wife	19.5	50.1	325.6	375.7	62.3	332.8	395.1
With dependents present	14.9	25.2	245.6	270.7	26.1	259.5	285.6
Without dependents present	4.6	24.9	80.0	104.9	36.3	73.3	109.5
Not-married family head	* 3.8	8.9	66.8	75.7	* 3.8	75.7	79.5
With dependents present	* 2.7	5.7	61.9	67.6	* 2.3	68.0	70.3
Without dependents present	* 1.1	* 3.2	5.0	8.1	* 1.5	7.6	9.2
Full-time student aged 15-24(a)	25.1	4.8	92.3	97.2	66.8	55.5	122.3
Other child/relative of family head	4.9	6.0	22.1	28.1	19.6	13.4	33.0
Not a member of a family	6.6	9.8	33.6	43.5	25.1	25.0	50.1
Living alone	* 3.0	9.1	21.5	30.6	14.0	19.6	33.6
Not living alone	* 3.6	* 0.8	12.1	12.9	11.1	5.4	16.5
Family status not determined	5.8	* 4.1	31.7	35.8	13.1	28.5	41.6
<i>Type of work preferred--</i>							
Full-time	37.5	23.9	123.7	147.7	90.7	94.4	185.1
Part-time	26.2	54.1	426.4	480.4	91.2	415.5	506.6
No preference	* 2.0	5.8	22.1	27.9	8.9	21.0	29.9
<i>Time since last job--</i>							
Had had a job	45.2	73.7	478.9	552.7	134.7	463.2	597.9
Under 6 months	12.1	6.8	80.0	86.8	36.8	62.1	98.9
6 and under 12 months	11.6	7.4	59.3	66.7	27.1	51.3	78.4
1 and under 3 years	11.2	16.7	106.2	122.9	30.8	103.3	134.1
3 and under 5 years	* 4.2	10.0	67.1	77.0	19.4	61.8	81.2
5 and under 10 years	* 4.3	15.5	88.3	103.7	15.3	92.8	108.1
10 and under 20 years	* 1.3	11.9	58.9	70.9	* 3.9	68.3	72.2
20 years or more	* 0.4	5.5	19.1	24.6	* 1.4	23.6	25.1
Had never had a job	20.4	10.1	93.2	103.3	56.1	67.7	123.7
<i>Reason for ceasing last job--</i>							
Had had a job	45.2	73.7	478.9	552.7	134.7	463.2	597.9
Job loser	15.7	32.1	159.5	191.7	68.1	139.2	207.3
Retrenched	6.8	17.2	59.3	76.5	25.3	58.0	83.3
Job was temporary or seasonal and did not leave to return to studies	* 2.9	6.4	47.5	53.9	11.2	45.6	56.8
Own ill health or injury	5.4	6.6	47.6	54.1	29.1	30.4	59.5
Business closed down for economic reasons	* 0.5	* 2.1	5.1	7.2	* 2.4	5.3	7.7
Job leaver	29.6	41.6	309.4	351.0	63.7	316.8	380.5
Unsatisfactory work arrangements	* 3.3	4.9	24.7	29.6	11.0	21.8	32.8
Job was temporary or seasonal and left to return to studies	* 3.5	* 0.3	9.2	9.5	6.5	6.6	13.1
Retired/did not want to work any longer	* 1.4	8.1	29.9	38.0	16.2	23.2	39.4
Returned to studies	6.6	* 0.4	15.5	15.8	13.6	8.8	22.4
To get married	* 0.2	* 3.9	22.0	25.9	* 0.1	25.9	26.0
Pregnancy/to have children	6.9	8.3	119.7	128.0	* 0.0	134.9	134.9
To look after family, house or someone else	* 1.0	* 3.1	24.8	28.0	* 1.5	27.4	28.9
To have holidays/to move house/spouse transferred	* 4.0	8.6	45.0	53.6	6.1	51.6	57.7
Business closed down for other reasons	* 0.9	* 1.7	7.3	9.1	* 3.3	6.6	9.9
Other	* 1.8	* 2.2	11.3	13.5	5.3	10.0	15.4
Not asked(b)	* 0.0	* 0.0	10.0	10.0	* 2.9	7.2	10.0
Had never had a job	..	..	93.2	103.3	56.1	67.7	123.7
<b>Total</b>	<b>65.7</b>	<b>83.8</b>	<b>572.2</b>	<b>656.0</b>	<b>190.8</b>	<b>530.9</b>	<b>721.7</b>

( a ) Excludes persons aged 20 to 24 attending school. ( b ) Persons who had a job but, up to the end of reference week, had been away from work without pay for four weeks or longer and had not been actively looking for work.

**TABLE 15. PERSONS NOT IN THE LABOUR FORCE WHO WANTED TO WORK BUT WERE NOT ACTIVELY LOOKING FOR WORK AND WERE AVAILABLE TO START WORK WITHIN FOUR WEEKS : TIME SINCE LAST JOB AND INTENTION TO LOOK FOR WORK IN THE NEXT TWELVE MONTHS, SEPTEMBER 1988 ('000)**

<i>Time since last job</i>	<i>Intention to look for work in the next twelve months</i>				<i>Total</i>
	<i>Intended to look</i>	<i>Did not intend to look</i>	<i>Did not know</i>	<i>Not asked(a)</i>	
<b>MALES</b>					
Had had a job	60.3	23.9	22.8	5.8	112.8
Under 6 months	19.2	* 1.9	* 3.1	5.5	29.7
6 and under 12 months	14.0	* 2.5	* 3.0	* 0.0	19.6
1 and under 3 years	15.7	* 3.9	5.9	* 0.3	25.7
3 and under 5 years	6.3	6.5	4.7	* 0.0	17.5
5 and under 10 years	* 4.0	6.5	* 4.4	* 0.0	14.9
10 and under 20 years	* 1.0	* 1.7	* 1.2	* 0.0	* 3.9
20 years or more	* 0.0	* 0.9	* 0.5	* 0.0	* 1.4
Had never had a job	27.2	7.6	8.5	* 0.0	43.3
<i>Total</i>	87.4	31.5	31.4	5.8	156.1
<b>FEMALES</b>					
Had had a job	169.6	151.6	105.6	13.0	439.8
Under 6 months	31.5	6.7	9.1	9.7	57.1
6 and under 12 months	26.2	10.3	9.6	* 1.0	47.2
1 and under 3 years	45.7	28.4	22.7	* 0.4	97.2
3 and under 5 years	20.8	24.5	13.4	* 0.8	59.5
5 and under 10 years	24.0	41.5	22.9	* 0.4	88.8
10 and under 20 years	17.1	30.1	19.3	* 0.5	66.9
20 years or more	* 4.3	10.0	8.7	* 0.3	23.2
Had never had a job	36.1	10.5	13.1	* 0.3	60.0
<i>Total</i>	205.7	162.2	118.6	13.3	499.9
<b>PERSONS</b>					
Had had a job	229.9	175.6	128.4	18.8	552.7
Under 6 months	50.7	8.6	12.2	15.3	86.8
6 and under 12 months	40.3	12.9	12.6	* 1.0	66.7
1 and under 3 years	61.4	32.3	28.6	* 0.6	122.9
3 and under 5 years	27.1	31.1	18.0	* 0.8	77.0
5 and under 10 years	28.0	48.0	27.3	* 0.4	103.7
10 and under 20 years	18.1	31.8	20.5	* 0.5	70.9
20 years or more	* 4.3	10.9	9.2	* 0.3	24.6
Had never had a job	63.3	18.1	21.6	* 0.3	103.3
<b>Total</b>	293.2	193.7	150.0	19.1	656.0

( a ) Comprises persons who had a job to go to and persons who had a job but, up to the end of reference week, had been away from work without pay for four weeks or longer and had not been actively looking for work.

**TABLE 16. PERSONS NOT IN THE LABOUR FORCE WHO WANTED TO WORK BUT WERE NOT ACTIVELY LOOKING FOR WORK AND WERE AVAILABLE TO START WORK WITHIN FOUR WEEKS : WHETHER LOOKED FOR WORK IN THE LAST TWELVE MONTHS AND INTENTION TO LOOK FOR WORK IN THE NEXT TWELVE MONTHS, SEPTEMBER 1988 ('000)**

<i>Whether looked for work in the last twelve months(a)</i>	<i>Intention to look for work in the next twelve months</i>				<i>Total</i>
	<i>Intended to look</i>	<i>Did not intend to look</i>	<i>Did not know</i>	<i>Not asked(b)</i>	
<b>MALES</b>					
Had looked for work	38.4	* 2.7	4.8	* 1.4	47.3
Less than 5 weeks ago	10.3	* 0.5	* 1.4	* 0.3	12.4
5 and less than 13 weeks ago	21.7	* 1.9	* 1.6	* 0.8	26.0
13 to 52 weeks ago	6.4	* 0.4	* 1.8	* 0.4	8.9
Had not looked for work	49.1	28.8	26.6	* 4.4	108.8
<b>Total</b>	<b>87.4</b>	<b>31.5</b>	<b>31.4</b>	<b>5.8</b>	<b>156.1</b>
<b>FEMALES</b>					
Had looked for work	78.2	9.6	17.9	* 2.0	107.7
Less than 5 weeks ago	21.9	* 1.7	* 3.4	* 0.2	27.2
5 and less than 13 weeks ago	39.5	* 3.7	8.5	* 1.3	53.0
13 to 52 weeks ago	16.7	* 4.3	6.0	* 0.5	27.5
Had not looked for work	127.6	152.5	100.7	11.3	392.1
<b>Total</b>	<b>205.7</b>	<b>162.2</b>	<b>118.6</b>	<b>13.3</b>	<b>499.9</b>
<b>PERSONS</b>					
Had looked for work	116.5	12.4	22.7	* 3.4	155.0
Less than 5 weeks ago	32.2	* 2.1	4.8	* 0.4	39.6
5 and less than 13 weeks ago	61.3	5.6	10.1	* 2.1	79.0
13 to 52 weeks ago	23.1	4.7	7.8	* 0.9	36.4
Had not looked for work	176.6	181.3	127.3	15.7	500.9
<b>Total</b>	<b>293.2</b>	<b>193.7</b>	<b>150.0</b>	<b>19.1</b>	<b>656.0</b>

( a ) Persons who had left a job in the last twelve months were only asked whether they had looked for work since that job. ( b ) Comprises persons who had a job to go to and persons who had a job but, up to the end of reference week, had been away from work without pay for four weeks or longer and had not been actively looking for work.

**TABLE 17. PERSONS NOT IN THE LABOUR FORCE WHO WANTED TO WORK BUT WERE NOT ACTIVELY LOOKING FOR WORK AND WERE NOT AVAILABLE TO START WORK WITHIN FOUR WEEKS : REASON NOT AVAILABLE TO START WORK WITHIN FOUR WEEKS, INTENTION TO LOOK FOR WORK IN THE NEXT TWELVE MONTHS AND TYPE OF WORK PREFERRED, SEPTEMBER 1988 ('000)**

<i>Reason not available to start work within four weeks</i>	<i>Intention to look for work in the next twelve months</i>				<i>Type of work preferred</i>			<i>Total</i>
	<i>Intended to look</i>	<i>Did not intend to look</i>	<i>Did not know</i>	<i>Not asked(a)</i>	<i>Full-time</i>	<i>Part-time</i>	<i>No preference</i>	
Personal reasons	64.7	51.7	37.9	4.9	69.2	80.0	10.1	159.3
Own ill health or injury, physical disability, or pregnancy	20.8	34.0	22.3	* 3.9	32.9	40.3	7.8	81.0
Studying	36.6	14.4	12.7	* 0.9	34.5	28.1	* 1.9	64.5
At school	25.5	12.1	10.4	* 0.4	26.8	20.7	* 0.9	48.4
Other educational institution	11.0	* 2.3	* 2.3	* 0.5	7.7	7.4	* 1.0	16.1
Moved house/holidays	7.4	* 3.3	* 2.9	* 0.1	* 1.8	11.6	* 0.3	13.7
Family reasons	23.6	45.7	26.1	8.2	14.3	85.2	* 4.2	103.6
Ill health of other than self	* 2.3	5.3	* 4.3	* 0.2	* 3.6	7.8	* 0.7	12.1
Unable to find suitable childcare	6.5	4.8	5.7	* 0.3	* 2.7	13.9	* 0.8	17.4
Children too young/preferred to look after children	14.7	35.6	16.1	7.7	8.0	63.4	* 2.7	74.1
Other reasons	4.9	8.9	* 3.7	* 1.0	4.8	11.4	* 2.1	18.4
<b>Total</b>	<b>93.2</b>	<b>106.3</b>	<b>67.7</b>	<b>14.1</b>	<b>88.4</b>	<b>176.5</b>	<b>16.4</b>	<b>281.3</b>
Males	29.6	24.8	17.7	* 1.8	42.3	25.5	6.1	73.9
Females	63.6	81.5	50.0	12.3	46.1	151.0	10.3	207.4

( a ) Persons who had a job but, up to the end of reference week, had been away from work without pay for four weeks or longer and had not been actively looking for work.

## APPENDIX A

## GLOSSARY

*Actively looking for work:* those persons who were taking active steps to find work.

*Active steps taken to find work:* they comprise:

- (a) writing, telephoning or applying in person to an employer for work;
- (b) answering a newspaper advertisement for a job;
- (c) checking factory or Commonwealth Employment Service noticeboards;
- (d) being registered with the Commonwealth Employment Service;
- (e) checking or registering with any other employment agency;
- (f) advertising or tendering for work; or
- (g) contacting friends or relatives.

*Available to start work within four weeks:* those persons who were available to start work within four weeks or could start work if childcare was available.

*Discouraged jobseekers:* persons with marginal attachment to the labour force who wanted to work and were available to start work within the next four weeks but whose main reason for not taking active steps to find work was that they believed they would not find a job for any of the following reasons—

- (a) considered to be too young or too old by employers;
- (b) difficulties with language or ethnic background;
- (c) lacked the necessary schooling, training, skills or experience;
- (d) no jobs in their locality or line of work; or
- (e) no jobs available at all.

*Job:* any employment, full-time or part-time, lasting two weeks or more.

*Job leavers:* persons who voluntarily ceased their last job.

*Job losers:* persons who involuntarily ceased their last job.

*Marginal attachment to the labour force:* persons who were not in the labour force in the reference week, wanted to work and—

- (a) were actively looking for work but did not meet the criteria to be classified as unemployed; or
- (b) were not actively looking for work but were available to start work within four weeks or could start work within four weeks if childcare was available.

The criteria determining those in the labour force are based on actual activity (i.e. working or looking for work) during the reference week. The criteria associated with marginal attachment to the labour force, in particular the concepts of wanting to work, reasons for not actively looking for work and availability to start work, are more subjective and are not based on the respondents' actual activity. Hence, the measurement against these criteria is affected by the respondents' own interpretation of the concepts used. An individual respondent's interpretation is affected by such factors as the respondent's work aspirations, as well as family, economic and other commitments.

*Not in the labour force and wanted to work:* persons who—

- (a) in the four weeks up to the end of the reference week had taken *active steps* to find work but did not meet the criteria to be classified as unemployed; or
- (b) although claiming to have looked for work (in the four weeks up to the end of the reference week), had not taken active steps to find work; or
- (c) in the four weeks up to the end of the reference week had not looked for work but in the survey answered 'yes' or 'maybe' to the question '*Even though you have not been looking for work would you like a full-time or part-time job?*'; or
- (d) in the four weeks up to the end of the reference week, had not looked for work but were responsible for children under twelve years of age and answered 'yes' or 'maybe' to the question '*If you had child care arrangements for your child(ren) under 12, would you like a job?*'.

*Persons not in the labour force:* persons who do not meet the criteria that would enable them to be classified as being in the labour force. To be classified as being in the labour force, a person must be aged 15 or over and be either *employed* or *unemployed*. Persons not in the labour force, therefore, include all persons aged 15 and over who are not employed, who want to work but do not meet the criteria to be classified as unemployed; who do not want to work; or who, through incapacity or infirmity, cannot work.

## APPENDIX B

### EXPLANATORY NOTES

#### Introduction

1. The monthly population survey (which is described in *The Labour Force, Australia* (6203.0)) comprises the monthly labour force survey and supplementary topics. This publication contains some results of a supplementary survey run in association with the September 1988 labour force survey conducted throughout Australia.

2. Of the respondents to the labour force survey, those who fell within the scope of the supplementary survey were asked additional questions. They were asked about their labour force aspirations and, if appropriate, their reasons for not actively looking for work and their availability for work.

#### Scope

3. The scope of this supplementary survey was the same as that used for the labour force survey (described in full in *The Labour Force, Australia* (6203.0)) except that it was restricted to persons not in the labour force aged 15 to 69.

#### Coverage

4. In the population survey, coverage rules are applied which aim to ensure that each person is associated with only one dwelling, and hence has only one chance of selection. See *The Labour Force, Australia* (6203.0) for more details.

#### Definitions

5. Definitions of labour force and demographic classifications appearing in this publication are given in *The Labour Force, Australia* (6203.0).

6. Unless otherwise stated, all characteristics referenced in this publication relate to the week before the interview (i.e. the reference week).

#### Results of the survey

7. Estimates of persons not in the labour force are also published in *The Labour force, Australia* (6203.0). However, more detailed information is contained in this publication.

8. Due to differences in the method of estimation used in this supplementary survey and that used in the labour force survey and the differences in the scope of this survey, there are some small variations between estimates in this publication and those in the corresponding issue of *The Labour Force, Australia* (6203.0).

9. The estimates in this publication refer to information collected in the survey month and, due to seasonal factors, may not be representative of other months of the year.

10. A publication *Persons Not in the Labour Force, Australia, September 1988, Summary* (6219.0) containing a

summary of the results of the survey was released on 25 November 1988.

11. Results of similar surveys, which have been conducted each March and September since March 1979 (except September 1987), and also in May 1977 and November 1975, have been given in previous issues of this publication.

12. It is proposed that this survey will be conducted next in September 1989.

#### Unpublished tables

13. In some cases, the ABS can also make available information which is not published. This information may be made available in one or more of the following forms: microfiche, photocopy, data tape, computer printout, manually-extracted tabulation. In general, a charge is made for providing unpublished information. Inquiries should be made to the officer whose name appears in the *Phone Inquiries* section at the front of this publication, or to Information Services in the nearest ABS Office.

#### Discontinuities in the series

14. The scope of surveys run prior to September 1988 included all persons aged 15 and over. In September 1988 the survey was restricted to exclude all persons aged 70 and over. Historical estimates contained in this publication have been revised to enable comparisons of estimates from this survey with those from surveys conducted prior to September 1988.

#### Survey sample redesign

15. The labour force survey sample has been redesigned and reselected using information collected in the 1986 Population Census. The new sample was phased in over the period September 1987 to December 1987. For details, see *Information Paper — Labour Force Survey — Sample Design* (6269.0).

#### Reliability of the estimates

16. Estimates in this publication are subject to sampling and non-sampling errors. For further information refer to the Technical Note, Appendix C.

#### Related publications

17. Other ABS publications which may be of interest include:

*The Labour Force, Australia* (6203.0)—issued monthly

*Labour Force Experience, Australia* (6206.0)—issued annually

*Underemployed Workers, Australia*, (6265.0)—issued irregularly

*Job Search Experience of Unemployed Persons, Australia, (6222.0)—issued biennially*

*Employment, Underemployment and Unemployment 1966-1983, Australia (6246.0)—issued irregularly*

*Successful and Unsuccessful Job Search Experience, Australia, (6245.0)—issued irregularly*

18. Current publications produced by the ABS are listed in the *Catalogue of Publications, Australia* (1101.0). The ABS also issues, on Tuesdays and Fridays, a *Publications Advice* (1105.0) which lists publications to be released in the next few days. The Catalogue and Publications Advice are available from any ABS office.

#### **Symbols and other usages**

- \* subject to sampling variability too high for most practical uses. See the Technical Note, Appendix C.
- . . not applicable.

19. Because estimates have been rounded, discrepancies may occur between sums of the component items and totals.

#### **Electronic services**

VIATEL. Key \*656# for selected current economic, social and demographic statistics.

AUSSTATS. Thousands of up-to-date time series are available on this ABS on-line service through CSIRONET.

For further information phone the AUSSTATS Help Desk on (062) 52 6017.

TELESTATS. This service provides foreign trade statistics tailored to users' requirements.

Further information is available on (062) 52 5404.

#### **Floppy disk service**

Selected ABS statistics are available on floppy disk. further information is available on (062) 52 6684.

## APPENDIX C

## TECHNICAL NOTE

**Estimation procedure**

1. The estimates are derived from the population survey by use of a ratio estimation procedure, which ensures that the estimates conform to an independently estimated distribution of the population for each capital city and remainder of State by age and sex, rather than to the corresponding distribution within the sample itself.

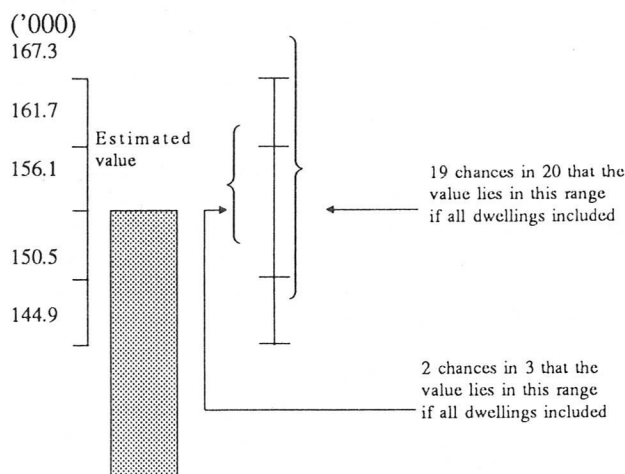
**Reliability of the estimates**

2. Since the estimates in this publication are based on information obtained from occupants of a sample of dwellings, they are subject to sampling variability, that is, they may differ from those that would have been produced if all dwellings had been included in the survey. One measure of the likely difference is given by the *standard error*, which indicates the extent to which an estimate might have varied by chance because only a sample of dwellings was included. There are about two chances in three that a sample estimate will differ by less than one standard error from the number that would have been obtained if all dwellings had been included, and about nineteen chances in twenty that the difference will be less than two standard errors. Another measure of the likely difference is the *relative standard error*, which is obtained by expressing the standard error as a percentage of the estimate.

3. Space does not allow for the separate indication of the standard errors of all estimates in this publication. A table of standard errors for general application is given on the following page. Since they are averages based on calculations for a limited number of past surveys over a wide range of labour force characteristics these numbers will not give a precise measure of the standard error of a particular estimate but they will provide an indication of its magnitude.

4. An example of the calculation and the use of standard errors in relation to estimates of persons is as follows. Table 15 shows the estimated number of males in Australia who were not in the labour force and who wanted to work but were not actively looking for work and were available to start work within four weeks was 156,100. Since this estimate is between 100,000 and 200,000 the standard error for Australia will be between 4,700 and 6,300 in the standard error table and can be approximated as 5,600 (rounded to the nearest 100). Therefore, there are about two chances in three that the value that would have been produced if all dwellings had been included in the survey will fall in the range 150,500 to 161,700 and about nineteen chances in twenty that the value will fall within the range 144,900 to 167,300. This example is illustrated in the following diagram.

5. As can be seen from the standard error table, *the smaller the estimate the higher is the relative standard error*. Very small estimates are thus subject to such high standard errors (relative to the size of the estimate) as to



detract seriously from their value for most reasonable uses. In the tables in this publication, only estimates with relative standard errors of 25 per cent or less and percentages based on such estimates are considered sufficiently reliable for most purposes. However, estimates and percentages with larger relative standard errors have been included and are preceded by an asterisk (e.g. \*3.4) to indicate they are subject to high standard errors and should be used with caution.

6. Proportions and percentages formed from the ratio of two estimates are also subject to sampling errors. The size of the error depends on the accuracy of both the numerator and the denominator. A formula to approximate the relative standard error (RSE) of a proportion is:

$$\text{RSE } (x/y) = \sqrt{[\text{RSE } (x)]^2 + [\text{RSE } (y)]^2}$$

7. Considering the example from paragraph 4 above, of the 156,100 males who wanted to work but were not actively looking for work and were available to start work within four weeks only 43,300 or 27.7 per cent had never had a job. The standard error of 43,300 is approximately 3,200 so the relative standard error is 7.4 per cent. The relative standard error for 156,100 is 3.6 per cent. Applying the above formula, the relative standard error of the proportion is  $\sqrt{(7.4)^2 + (3.6)^2}$  or 6.5 per cent, giving a standard error for the proportion (27.7 per cent) of 1.8 percentage points. Therefore, there are about two chances in three that the proportion of males who had never had a job and who wanted to work but were not actively looking for work and were available to start work within four weeks was between 25.9 per cent and 29.5 per cent and nineteen chances in twenty the proportion was within the range 24.1 per cent to 31.3 per cent.

8. Published estimates may also be used to calculate the difference between two survey estimates (of numbers or percentages). Such an estimate is subject to sampling error. The sampling error of the difference between two



estimates depends on their standard errors and the relationship (correlation) between them. An approximate standard error (SE) of the difference between two estimates (x-y) may be calculated by the following formula:

$$SE (x-y) = \sqrt{[SE (x)]^2 + [SE (y)]^2}$$

While this formula will only be exact for differences between separate and uncorrelated characteristics or subpopulations it is expected to provide a good approximation for all differences likely to be of interest in this publication.

9. The imprecision due to sampling variability, which is measured by the standard error, should not be confused with inaccuracies that may occur because of imperfections in reporting by interviewers and respondents and errors made in coding and processing data. Inaccuracies of this kind are referred to as the *non-sampling error*, and they may occur in any enumeration, whether it be a full count or a sample. Every effort is made to reduce the non-sampling error to a minimum by careful design of questionnaires, intensive training and supervision of interviewers and efficient operating procedures.

#### STANDARD ERRORS OF ESTIMATES

Size of estimate	N.S.W.	Vic.	Qld	S.A.	W.A.	Tas.	N.T.	A.C.T.	Australia	
									—number—	Relative standard error (per cent)
500						230		240		
600						250		260		
800			—	350	370	290	—	290	—	—
1,000	—		460	390	410	320	480	320	500	49.8
1,300	650	—	520	440	460	360	540	350	580	44.2
1,500	700	710	560	470	490	380	570	380	620	41.4
1,800	760	780	620	520	540	410	610	400	690	38.1
2,000	810	820	650	540	560	430	640	420	730	36.3
2,500	900	910	720	600	620	480	700	460	820	32.7
3,000	980	1,000	790	650	680	520	750	490	900	30.0
3,500	1,050	1,050	850	700	730	550	790	520	970	27.8
4,000	1,100	1,150	910	740	770	580	840	540	1,050	26.1
4,500	1,200	1,200	960	780	810	610	870	570	1,100	24.6
5,000	1,250	1,250	1,000	820	850	640	910	590	1,150	23.4
6,000	1,350	1,400	1,100	880	920	690	980	630	1,300	21.4
10,000	1,700	1,750	1,400	1,100	1,150	840	1,200	750	1,650	16.5
20,000	2,350	2,350	1,850	1,450	1,500	1,100	1,550	930	2,300	11.5
50,000	3,450	3,400	2,700	2,050	2,100	1,500	2,150	1,200	3,500	7.0
100,000	4,550	4,400	3,500	2,600	2,700	1,850	2,700	1,450	4,700	4.7
200,000	6,000	5,700	4,450	3,250	3,400	2,250	3,400	1,700	6,300	3.1
300,000	7,000	6,500	5,100	3,700	3,900	2,500		1,850	7,300	2.4
500,000	8,400	7,700	6,000	4,350	4,550	2,850		2,050	8,900	1.8
1,000,000	10,800	9,600	7,500	5,300	5,600				11,500	1.2
2,000,000	13,700	11,800	9,100	6,300	6,800				14,600	0.7
5,000,000	18,400	15,000	11,500						19,700	0.4
10,000,000	22,700								24,200	0.2
20,000,000									29,400	0.1

Printed by R.D. RUBIE, Commonwealth Government Printer, Canberra  
(c) Commonwealth of Australia 1989

**Recommended retail price: \$11.50**



2062200009885

ISSN 0819-9914